

**WIRING CONNECTION BETWEEN METER  
SOCKET & CURRENT TRANSFORMER  
BY AE PERSONNEL**

THE AREA IN FRONT OF THE METER  
IS TO BE CLEAR OF ALL OBSTRUCTIONS  
FOR RADIUS OF 4' TO ALLOW AE  
SAFE ACCESS FOR READING AND  
MAINTENANCE OF EQUIPMENT

WHEN NECESSARY, PROTECTION FROM  
PHYSICAL DAMAGE MUST BE PROVIDED  
FOR METERING EQUIPMENT

METER SOCKET TO BE MOUNTED &  
CONDUIT INSTALLED BY ELECTRICAL  
CONTRACTOR

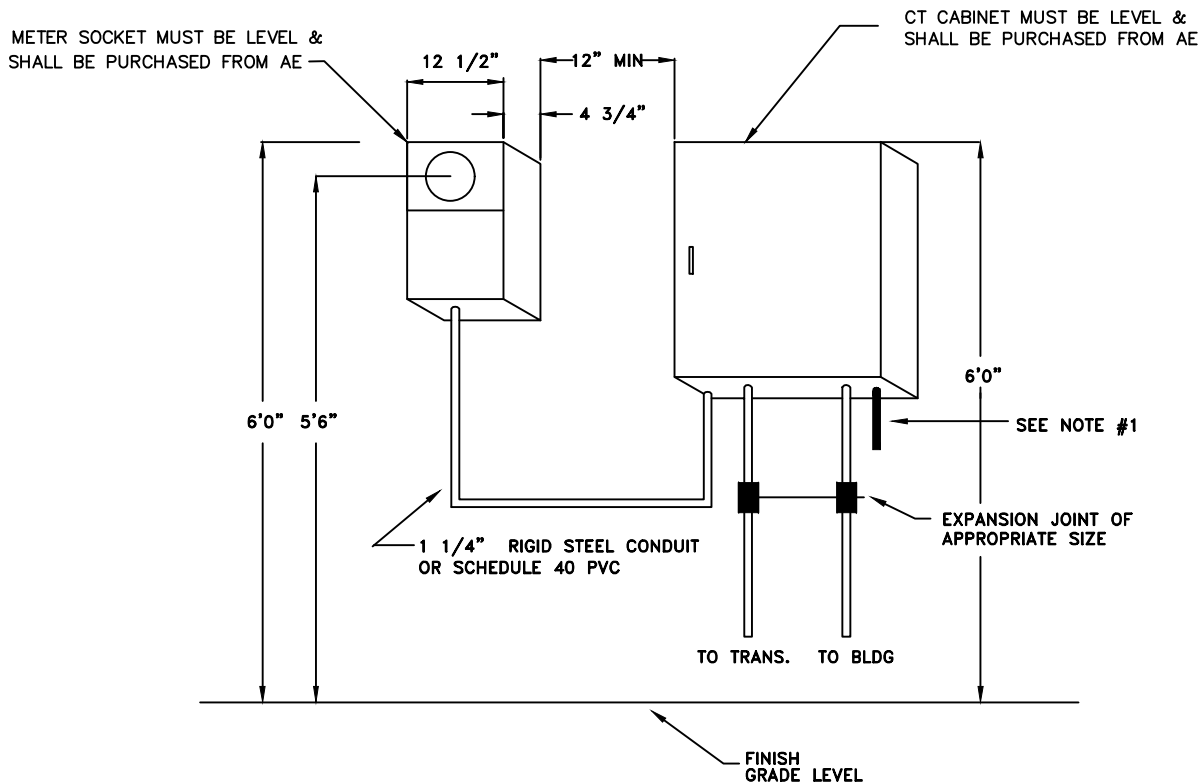
NO CHANGES ARE TO BE MADE IN  
SPECIFICATIONS UNLESS APPROVED  
BY AE METER DEPT. IN ADVANCE

**\*NOTE #1**

GROUND CONNECTION  
MINIMUM CONDUCTOR SIZE #6 COPPER

**GROUNDING:**

- 1) TO MAIN PANEL GROUND  
IN BUILDING
- 2) IN SEPARATE SCHEDULE 80  
PVC CONDUIT TO BUILDING  
GROUND



**AUBURN ELECTRIC DEPT.**

CT-Cabinet-Metering

NOT TO SCALE

DATE: 17-JUL-2025